



Available in 80 and 120 Gallon Models

► 6-Year Limited Tank and Parts Warranty*

Brass drain valve
 Choice of two models...storage tank or single element water heater
 Temperature and pressure relief valve included
 Collector feed and return fittings located at front of tank for convenient installation
 Isolated tank design for better heat retention
 High efficiency heating element
 Rheemglas® tank lining resists corrosion and prolongs tank life
 Heat exchanger: copper tubing wrapped around and secured to the tank.
 Double wall, vented design for positive leak detection

Cold water inlet brings cold water to tank bottom to prevent mixing with heated water
 Anode rod equalizes aggressive water action for prolonged tank life
 Cold water inlet, hot water outlet, relief valve and anode rod at top of tank for easy access and fast, economical installation
 Automatic temperature control
 Over temperature protector

* See Residential Warranty Information Brochure for complete warranty information.



DESCRIPTION				ROUGHING IN DIMENSIONS (SHOWN IN INCHES)			ENERGY INFORMATION
T Y P E	GAL. CAP.	MODEL NUMBER	ELEMENT WATTAGE UPPER	HEIGHT A	DIAMETER B	APPROX. SHIP WT. (LBS.)	APPROX. R- FACTOR
	80	81V80HE-1	4500 W*	58-3/4	24-1/2	222	R-17.3
	80	81V80HE-T	Storage only	58-3/4	24-1/2	222	R-17.3
	120	82V120HE-1	4500 W*	62	28-1/4	380	R-17.3
	120	82V120HE-T	Storage only	62	28-1/4	380	R-17.3

* Heaters furnished with standard 240 volt AC, single phase non-simultaneous wiring and 4500 watt heating element.
If heating elements of different wattages than those shown are demanded by zone requirements, they must be specifically requested.
 To prevent corrosion, proper pH levels in transfer fluid must be maintained.
 Solaraide models meet all current state requirements for solar storage tanks.
 The tanks are Rheemglas lined and are designed to operate up to 150 PSI.

A special 1/2" NPT opening is provided for installation of a "probe type" thermostat.

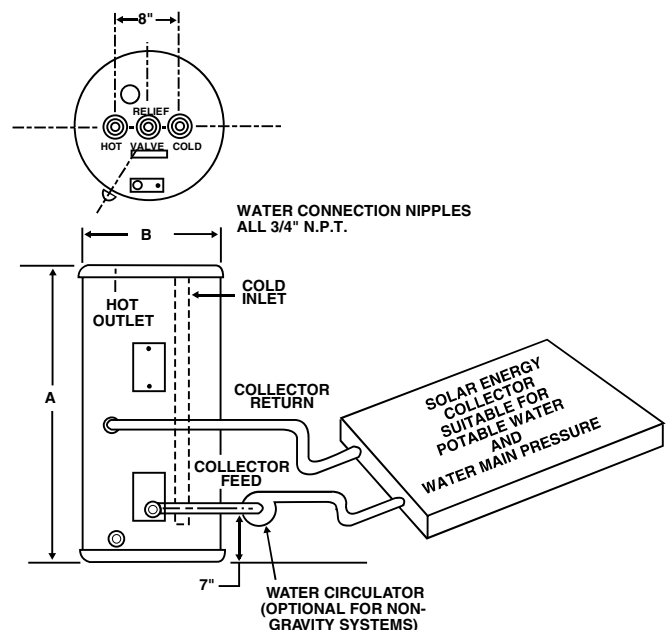


COPPER COIL DATA (Type L Copper)

Maximum pressure = 150 PSI
 Maximum temperature = 185° F
 Tube I.D. = 5/8"

Solaraide HE Tank Capacity	Coil Capacity Gallons	Length of Tubing Around Tank (Ft)
80 Gallons	2.2	120
120 Gallons	2.6	143

PRESSURE DROP THROUGH COIL (Feet of H ₂ O)		
Flow Rate	Head Loss (Feet)	
	80 Gallon	120 Gallon
1 GPM	1.3	1.6
2 GPM	4.8	5.7
3 GPM	10.0	12.0



In keeping with its policy of continuous progress and product improvement, Rheem reserves the right to make changes without notice.